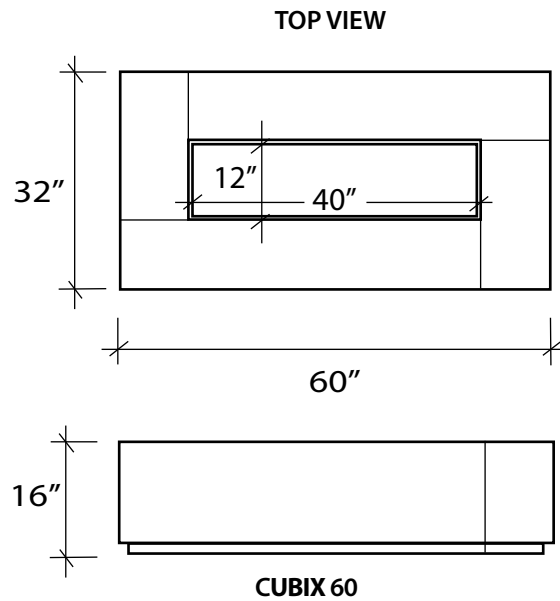
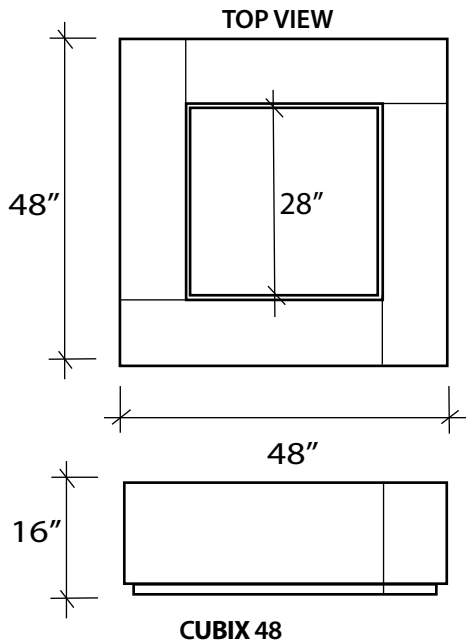


FIRE PIT CUBIX



Note: Does not include fire glass & fire balls. Burner kit sold separately

GAS VALVE INCLUDED
INSTALL ON 4" SLAB

* NO BLOCK REQUIRED

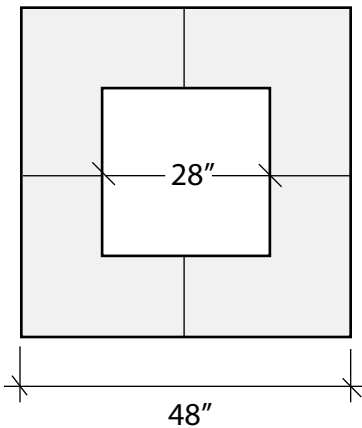
ONLY USE LAVA ROCK OR FIRE GLASS

Product		Weight
CUBIX-48	4 PCS 48" SQ. x 16" HEIGHT	480
CUBIX-60	4 PCS 60" L x 32" W x 16" HEIGHT	480

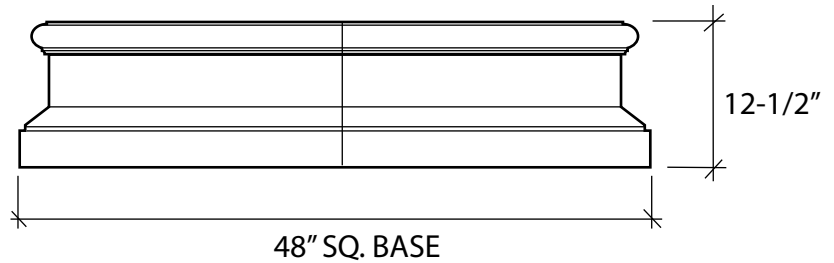
Fire Pit -48



TOP VIEW



SIDE VIEW



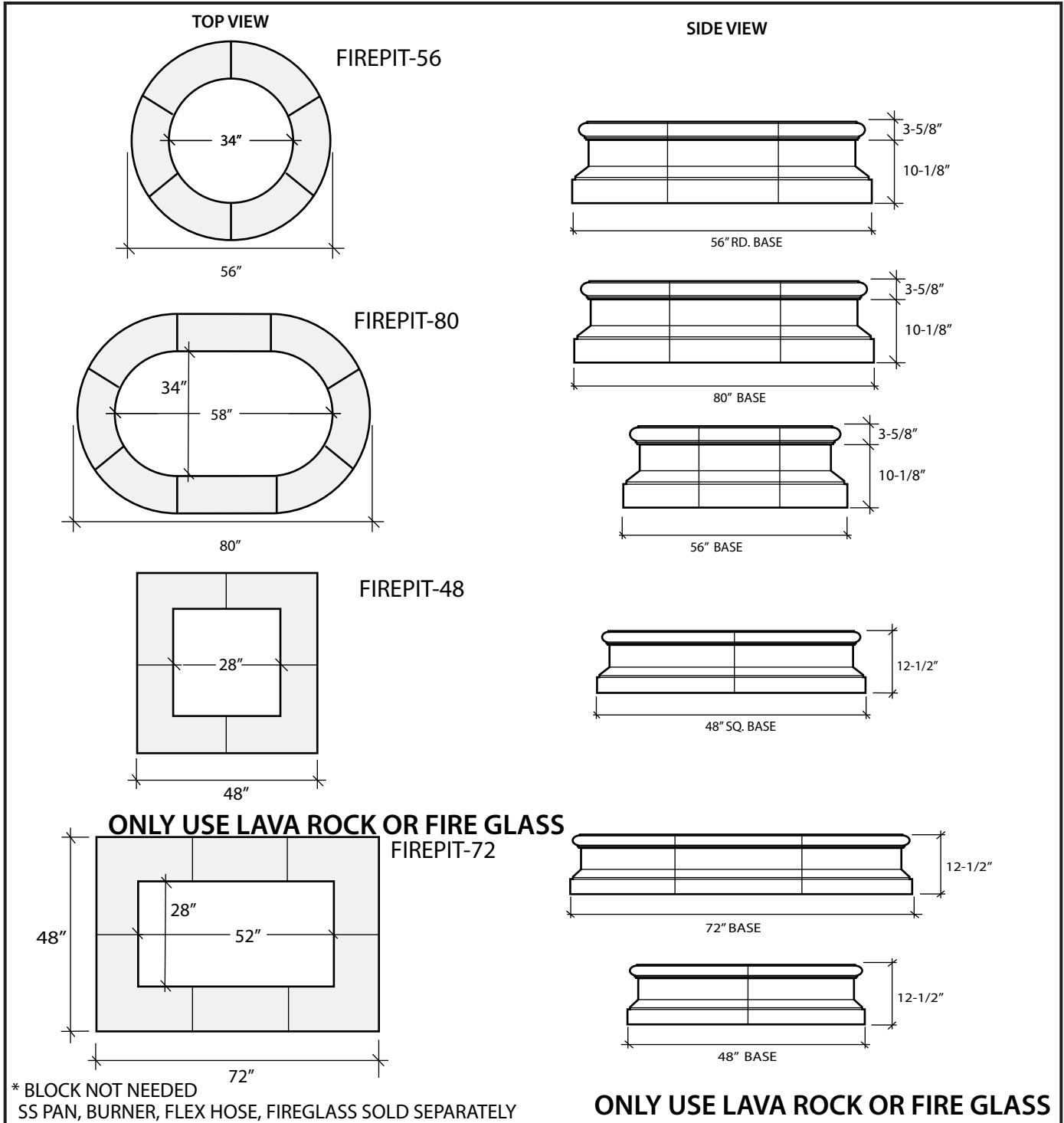
INCLUDES GAS VALVE
INSTALL ON 4" SLAB

* NO BLOCK REQUIRED

ONLY USE LAVA ROCK OR FIRE GLASS

Product	Dimensions	Weight
FIREPIT-48SQ	SQUARE FIRE PIT KIT 28"SQ. (I.D.) 48" SQ. BASE	580
4 BF-1010C	BASE CORNER 10" B x 10" TH x 23-7/8" L	90
4 ST-720-9C	CAP CORNER 8-1/2" B x 2-1/4" TH x 23-7/8" L	55
OPTIONS	(USE TO CREATE RECTANGLES)	
BF-1010S	BASE STRIAGHT 10" B x 10" TH x 23-7/8" L	56
ST-720-9S	CAP STRIAGHT 8-1/2" B x 2-1/4" TH x 23-7/8" L	41

FIRE PIT QUICK VIEW

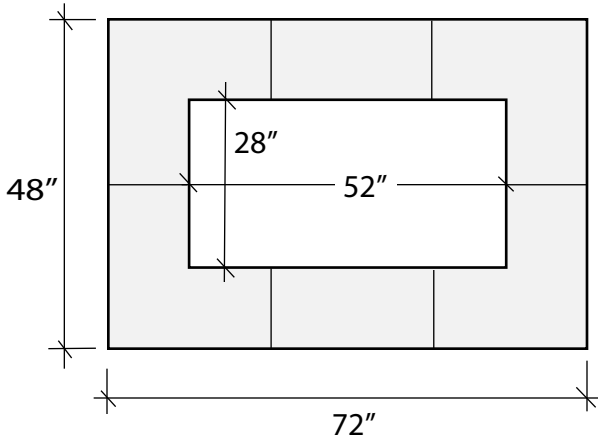


Product	Dimensions	Wt	PRICE
FIREPIT-56	ROUND FIRE PIT (12 PCS) 34" (I.D.) 56" (O.D)	800	\$1150
FIREPIT-48	SQUARE FIRE PIT (8 PCS) 48" OUTSIDE, 28" INSIDE	580	\$1150
FIREPIT-72	RECT. FIRE PIT (12 PCS) 72" X 48" OUT, 52" X 28" INSIDE	774	\$1425
FIREPIT-80	OVAL FIRE PIT (16 PCS) 80" X 56" OUT, 58" X 34" INSIDE	1060	\$1550

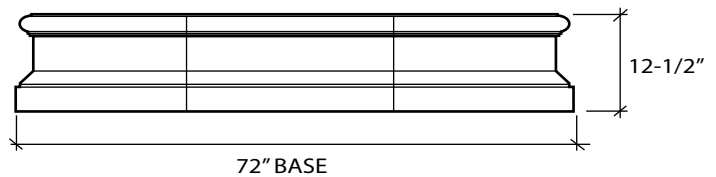
Fire Pit -72



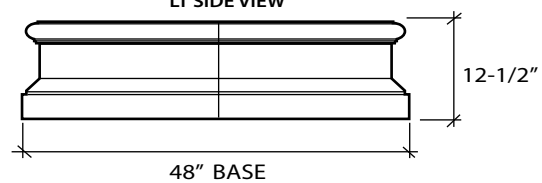
TOP VIEW



RT SIDE VIEW



LT SIDE VIEW



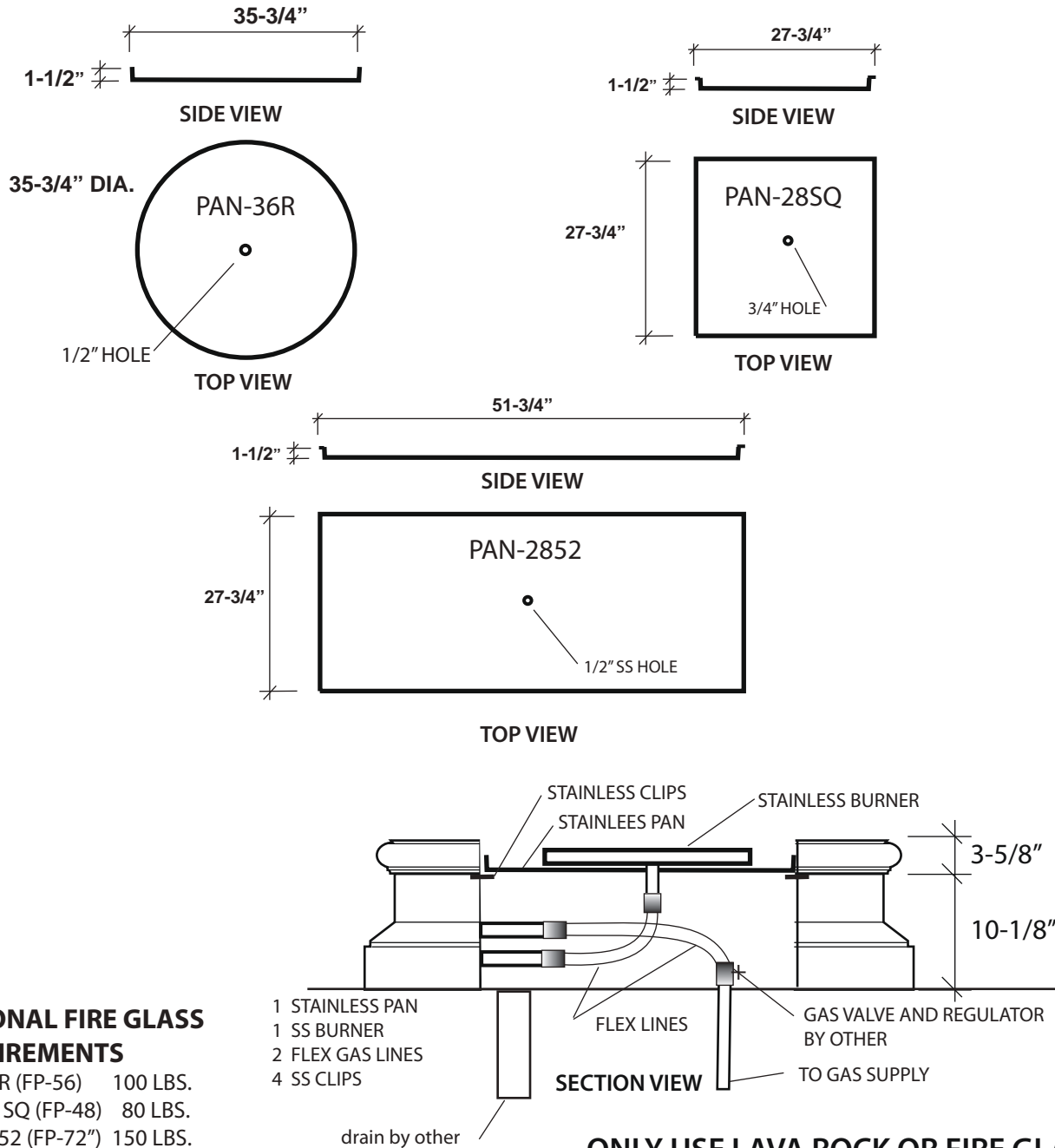
* NO BLOCK REQUIRED

ONLY USE LAVA ROCK OR FIRE GLASS

GAS VALVE INCLUDED
INSTALL ON 4" SLAB

Product	Dimensions	Weight
FIREPIT-72	RECT FIRE PIT KIT 28" x 52" (I.D.) 72" x 48" SQ. BASE	774
(4) BF-1010C	BASE CORNER 10" B x 10" TH x 23-7/8" L	90
(4) ST-720-9C	CAP CORNER 8-1/2" B x 2-1/4" TH x 23-7/8" L	55
(2) BF-1010S	BASE STRAIGHT 10" B x 10" TH x 23-7/8" L	56
(2) ST-720-9S	CAP STRAIGHT 8-1/2" B x 2-1/4" TH x 23-7/8" L	41

FIREPIT BURNER/PAN KIT



ONLY USE LAVA ROCK OR FIRE GLASS

Product	Dimensions
PAN-36R	35-3/4" DIA. X 1-1/2" DP ROUND SS PAN
PAN-28SQ	27-3/4" X 27-3/4" X 1-1/2" DP SQUARE SS PAN
PAN-2852	27-3/4" X 51-3/4" X 1-1/2" DP RECTANGLE SS PAN
BURNER-18R	18" ROUND SS BURNER
BURNER-1616	16" SQUARE SS BURNER
BURNER-1236	12" X 36" "H" SS BURNER
BK-36-ROUND	36" ROUND SS PAN, 16" SQ. SS BURNER, (2) 36" FLEX LINES
BK-28-SQ	28" SQ. SS PAN, 16" SQ. SS BURNER, (2) 36" FLEX LINES
BK-2852-RECT	28" X 52 SQ. SS PAN, 12" X 36" SQ. SS BURNER, (2) 36" FLEX LINES