

## OUTDOOR GAS BURNING FIREPLACES

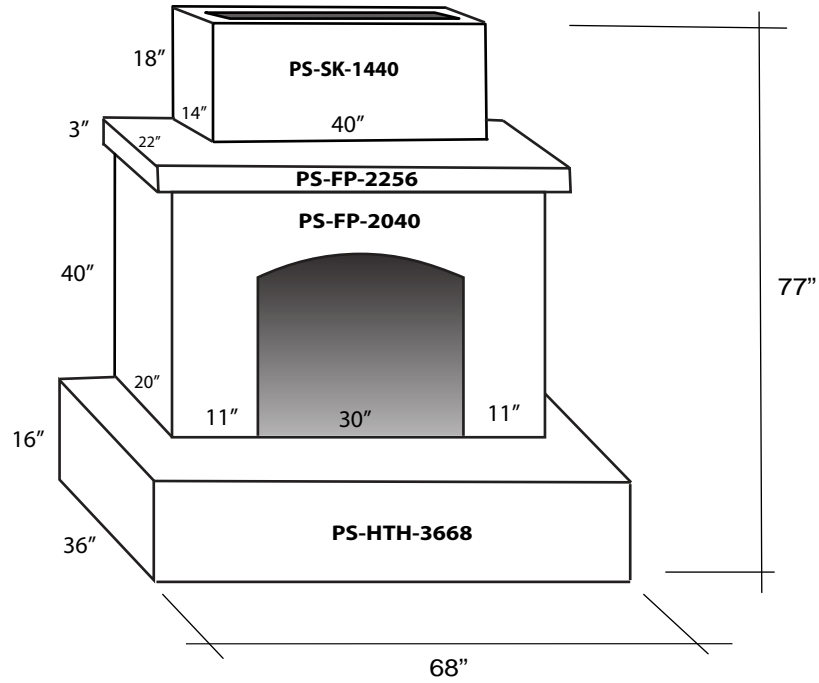


## LUXURY OUTDOOR LIVING

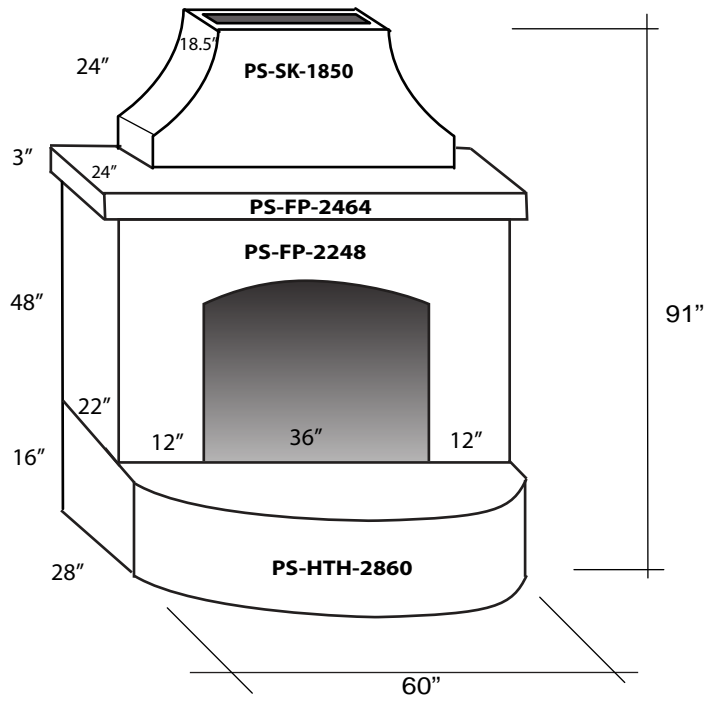
1201 E. WAKEHAM. SANTA ANA. CA 92705  
PH. 714-836-5757 FAX 714-836-4433 WWW.PACIFICSTONE.NET

# GAS BURNING FIREPLACE COMBINATIONS

**INSTALL ON A 6" SLAB  
 READY TO APPLY FINISH  
 EASY ASSEMBLY**



## TORREY PINES

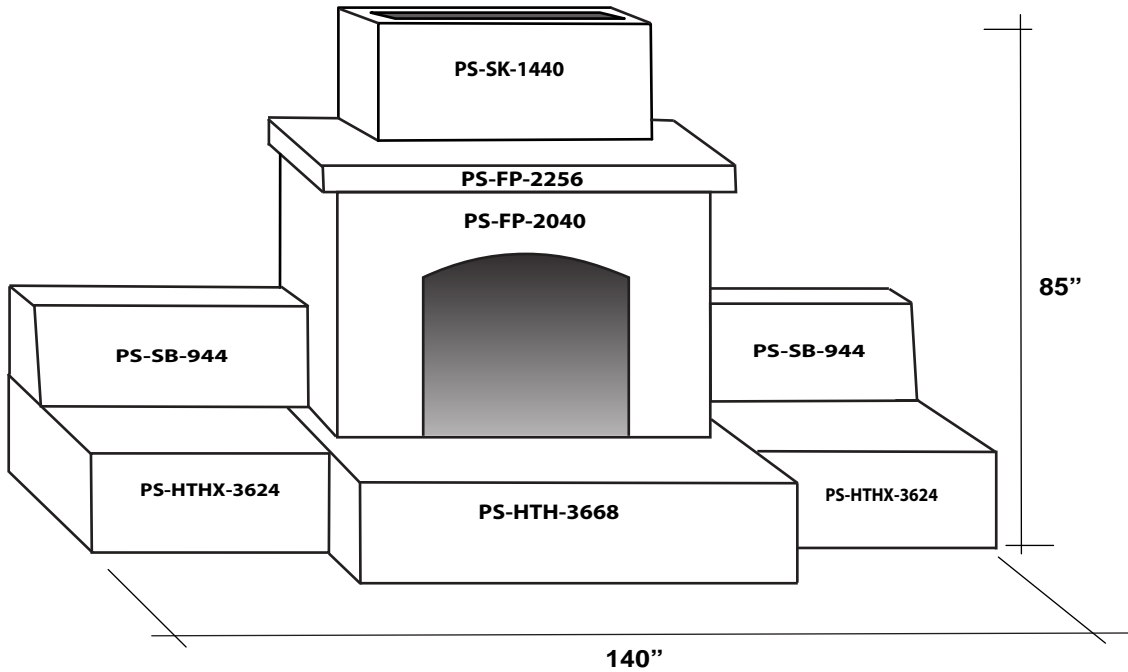


## SALINAS

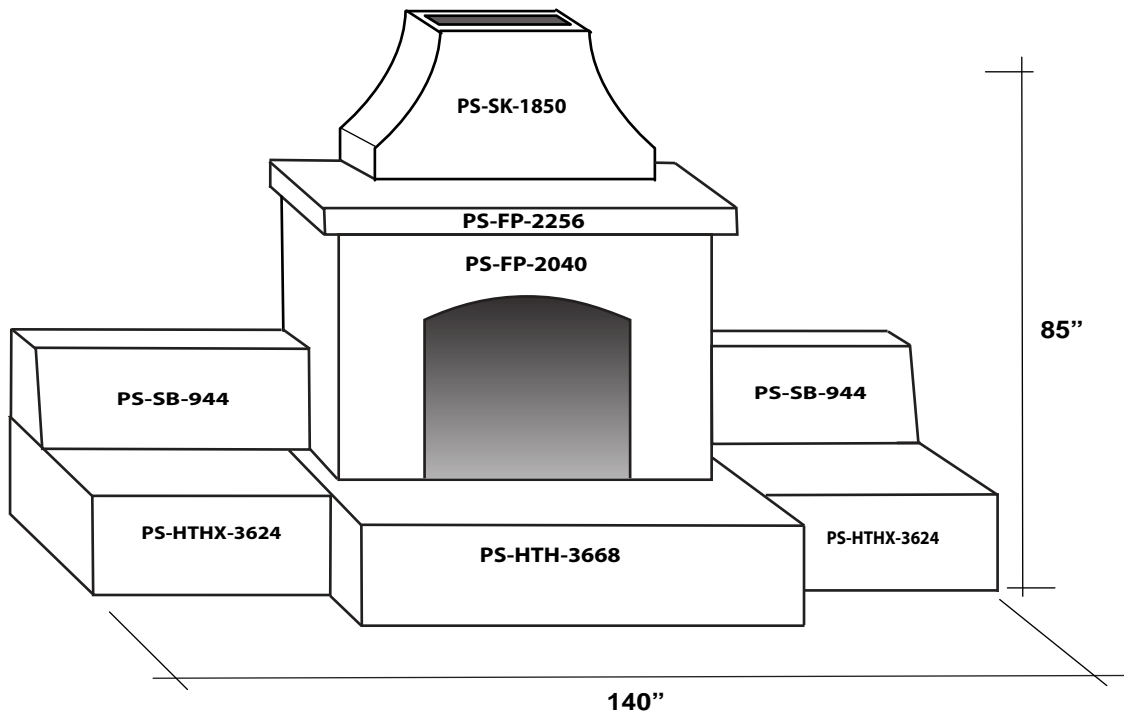
**KIT INCLUDES:**  
 MACHINE BOLTS, WASHERS AND NUTS  
 GAS VALVE

**OPTIONS:**  
 REFRACTORY PANELS (SIDES)  
 FIRE BRICK (QTY 20 FOR BOTTOM)  
 PRECAST TRIM

# GAS BURNING FIREPLACE COMBINATIONS



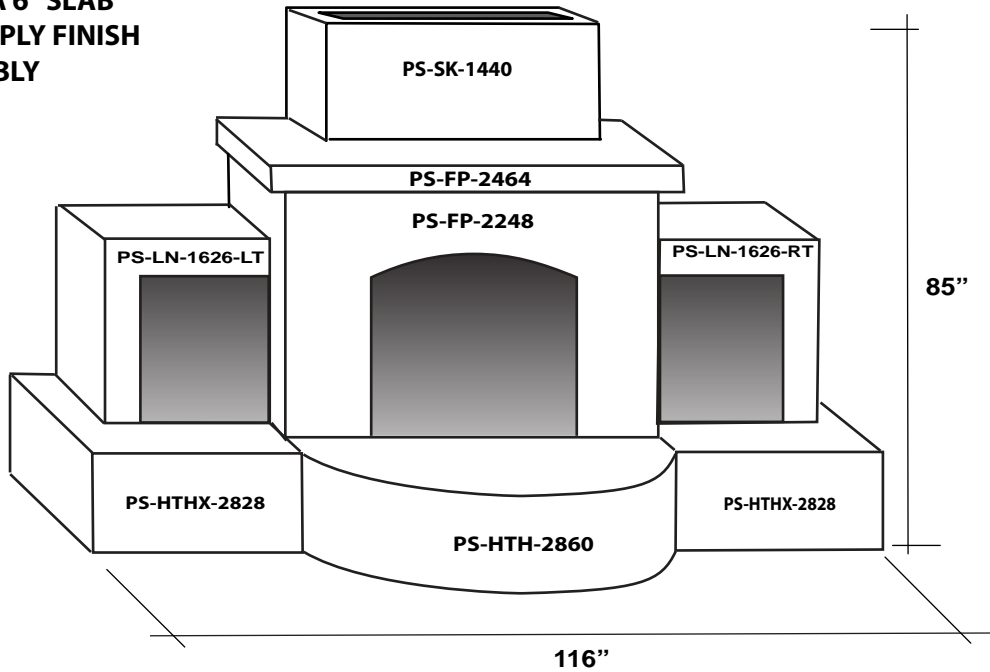
**PISMO**



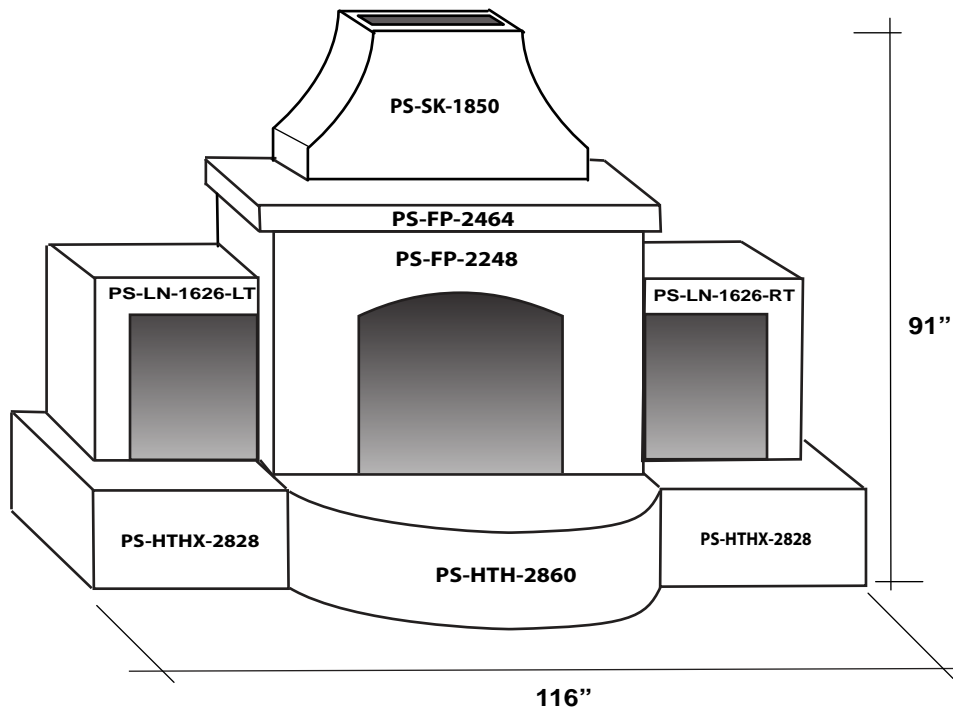
**EL MORRO**

# GAS BURNING FIREPLACE COMBINATIONS

INSTALL ON A 6" SLAB  
READY TO APPLY FINISH  
EASY ASSEMBLY

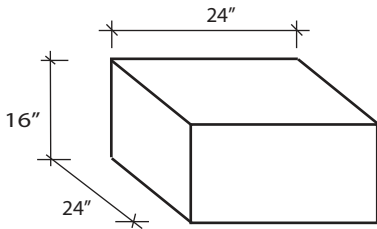


**LUNADA**

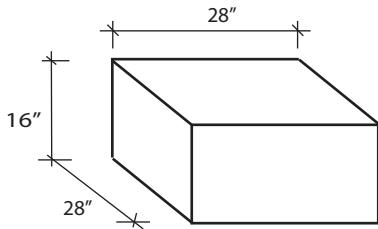


**SONOMA**

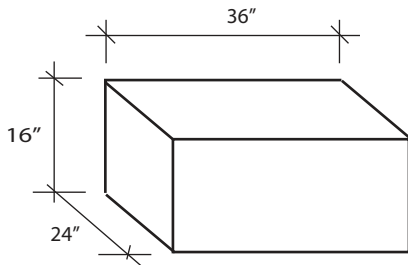
## OUTDOOR FIREPLACE ACCESSORIES



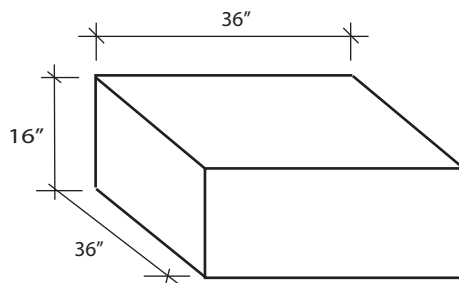
**PS-HTHX-2424**



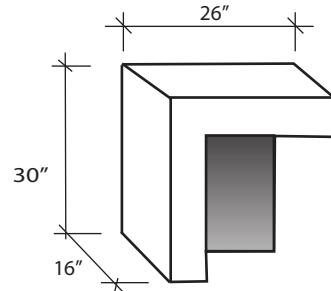
**PS-HTHX-2828**



**PS-HTHX-3624**

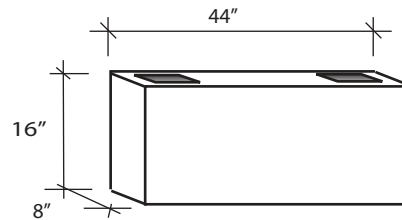


**PS-HTHX-3636**

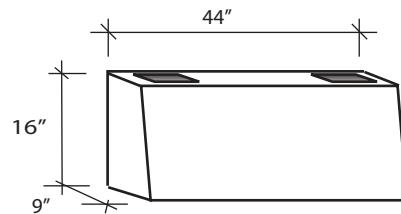


**LOG NICHE**

**PS-LN-1626-LT  
PS-LN-1626-RT**



**PS-SB-844**



**PS-SB-944**

**KIT INCLUDES:**  
MACHINE BOLTS, WASHERS AND NUTS  
GAS VALVE

**OPTIONS:**  
REFRACTORY PANELS (SIDES)  
FIRE BRICK (QTY 20 FOR BOTTOM)  
PRECAST TRIM



ARCHITECTURAL PRECAST CONCRETE

## OUTDOOR GAS BURNING FIREPLACES

EASY ASSEMBLY READY TO APPLY FINISH

### INCLUDES:

- GAS VALVE
- MACHINE BOLTS

## PRODUCT LIST

Product	Description	Wt. (lbs.)
PS-HTH-3668	36" W x 16" H x 68" L HEARTH	390
PS-HTH-2860	35" W x 16" H x 60" L RADUIS HEARTH	370
PS-FP-2040	20" W x 40" H x 52" L FIRE BOX	270
PS-FP-2248	22" W x 48" H x 60" L FIRE BOX	300
PS-FP-2464	24" W x 3" H x 64" L MANTEL	160
PS-FP-2256	22" W x 3" H x 56" L MANTEL	160
PS-SK-1850**	18.5" W x 25" H x 42" L STACK W/ CURVE	160
PS-SK-1440**	14" W x 18" H x 40" L STACK	160
PS-HTHX-3636	36" W x 16" H x 36" L HEARTH EXT	241
PS-HTHX-3624	24" W x 16" H x 36" L HEARTH EXT	187
PS-HTHX-2424	24" W x 16" H x 24" L HEARTH EXT	142
PS-HTHX-2828	28" W x 16" H x 28" L HEARTH EXT	162
PS-SB-844	8" W x 16" H x 44" L SEAT BACK	136
PS-SB-944	9" W x 16" H x 44" L SEAT BACK	146
PS-LN-1626-RT	16" W x 30" H x 26" L LOG NICHE	149
PS-LN-1626-LT	16" W x 30" H x 26" L LOG NICHE	149
PS-SKX-1418	14" W x 18" H x 40" L STACK EXT	190
REF-2238	REFRACTORY PANELS (SET OF 3)	94
PS-FIRE BRICK	FIRE BRICK (SET OF 20)	116

### COMBINATIONS

PS-O-SALINAS	36"W X 91"H X 60"L	
PS-O-TORREY PINES	36"W X 77"H X 68"L	
PS-O-LUNADA	36"W X 85"H X 116"L	
PS-O-SONOMA	36"W X 91"H X 116"L	
PS-O-EL MORRO	36"W X 88"H X 140"L	
PS-O-PISMO	36"W X 78"H X 140"L	

\* CRATING CHARGE MAY APPLY

\* CHECK FOR LOCAL BUILDING PERMITS & REQUIREMENTS

\*\* SOME PARTS AVAILABLE PRE-FINISHED

PH. 714-836-5757 FAX 714-836-4433 WWW.PACIFICSTONE.NET