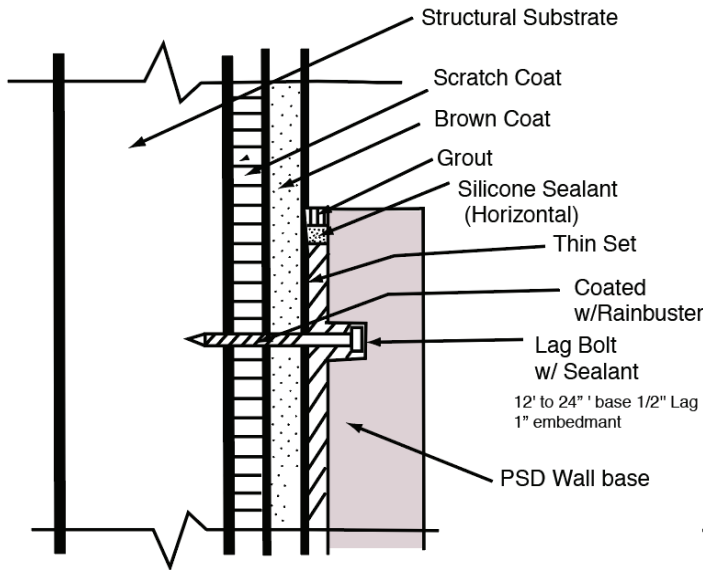


Wall Base Installation Guide

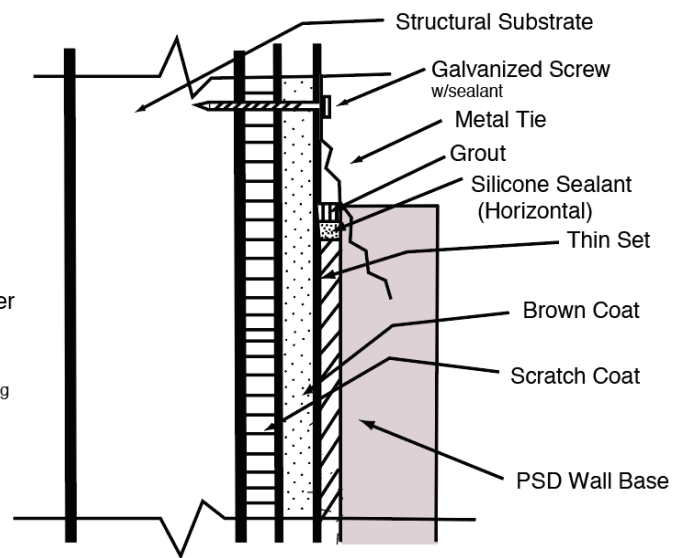
- 1.1 Install PSD, INC. Pre-cast plumb, true, and level in accordance with installation instructions and the PSD Technical Data Sheet. All pre-cast should be set by experienced and qualified pre-cast masonry installers.
- 1.2 All substrate receiving PSD, INC. Pre-cast shall be cleaned of any oil, paint, dust, debris, etc. Surface shall be smooth, level, and competent of a firm and permanent adhesion to the setting material.
- 1.3 When setting PSD, INC. Pre-cast with thin set and acrylic admix, any piece not thoroughly wet shall be saturated with potable water and excess water should be removed prior to setting.
- 1.4 Unless otherwise stated, every piece shall be set in a full bed of mortar with all vertical joints flushed full. All anchors shall be firmly in place with all anchor holes filled completely with mortar.
- 1.5 If support is needed, brace each piece with a diagonal support to the face and rest on a previously installed temporary ledge to be removed after full cure of setting material.
- 1.6 It is critical that all PSD, INC. Pre-cast shall be protected from splashing mortar or damage by other trades. If a foreign matter does contact the pre-cast must be removed immediately.
- 1.7 The repair of PSD, INC. Pre-cast, whether it be chipped, cracked, or damaged, shall be done only by masons skilled in this work with materials furnished by the manufacturer and according to their direction.
- 1.8 PSD, INC. Pre-cast shall be cleaned where necessary by scrubbing with a bristle fiber brush, using soap powder and water. Then rinse thoroughly and generously with water. No acid or prepared cleaners shall be used without the approval of PSD, INC.



Option A

(Lag Bolt)

* Lag Bolts not included



Option B

(Metal Tie)

* Metal ties upon request